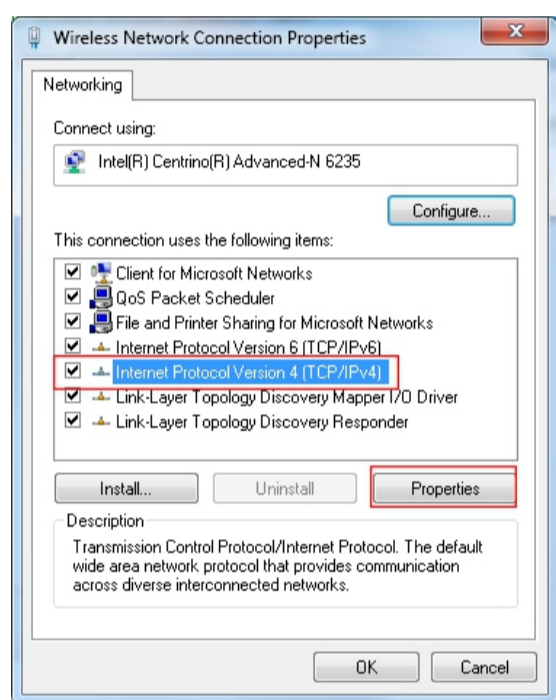
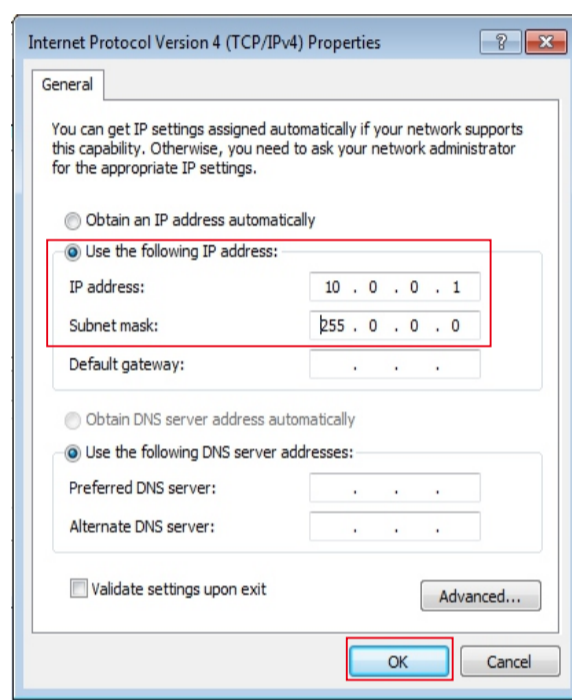


ABB-Welcome
M2308
2 wire adaptor

2TMJ16000M070100



Picture 1



Picture 2



Picture 3

Scenario 1: PC and 2 wire adaptor are directly connected

Step 1: Set IP address of PC

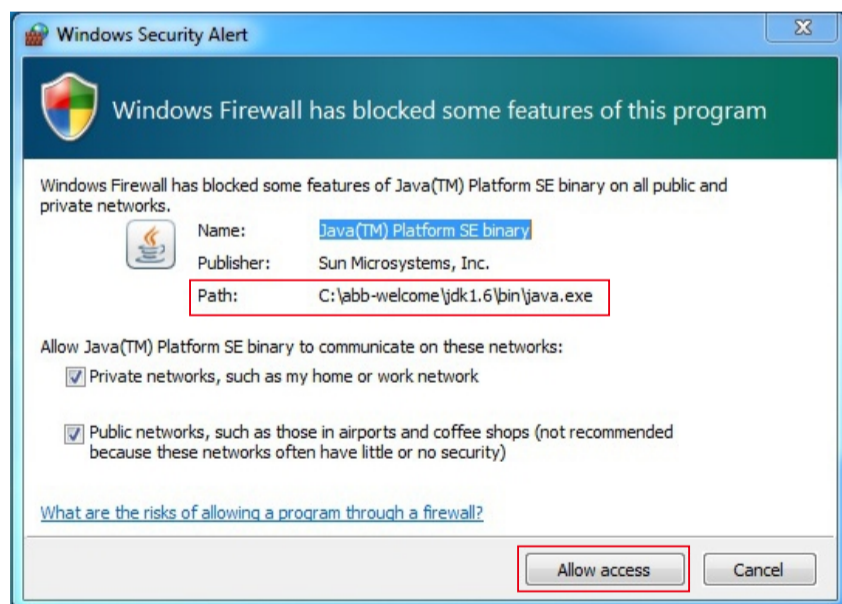
Click "Internet Protocol Version 4 (TCP/IPv4)"--"Properties" (see picture 1)
Input IP address and subnet mask like below: (see picture 2)

IP address: 10.0.0.1

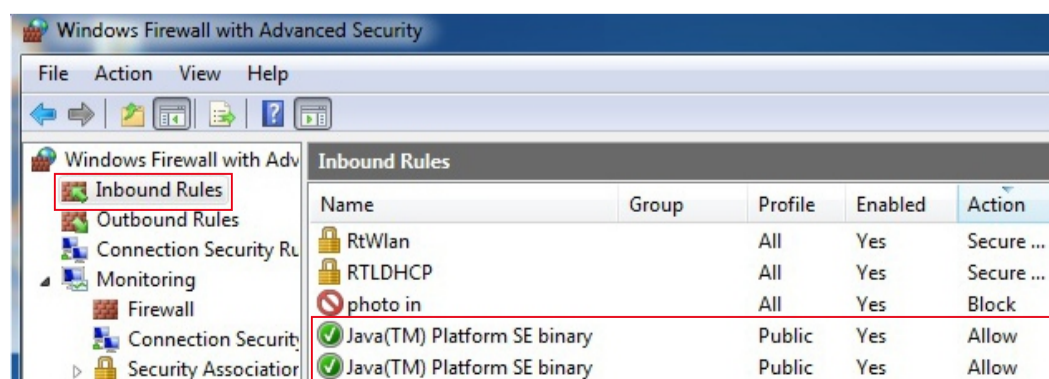
Subnet mask: 255.0.0.0

Step 2: Set network connection of PC

Disable the wireless network. (see picture 3)



Picture 4



Picture 5

Step 3: Enable ports of PC firewall

Make sure the following ports are enabled by PC firewall (Window Firewall or 3rd-party anti-virus software):

TCP: 7000, 7005, 7006, 7070, 7554, 7660, 7777, 8554

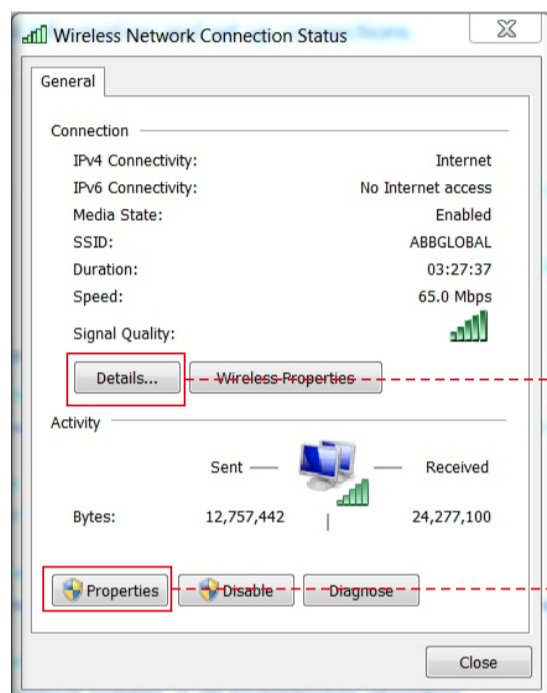
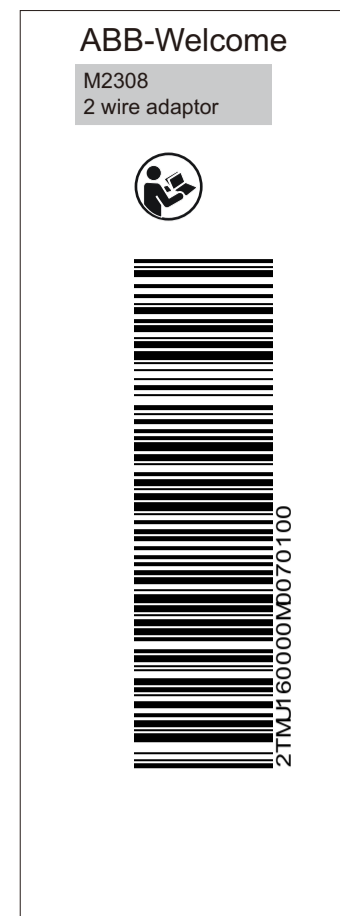
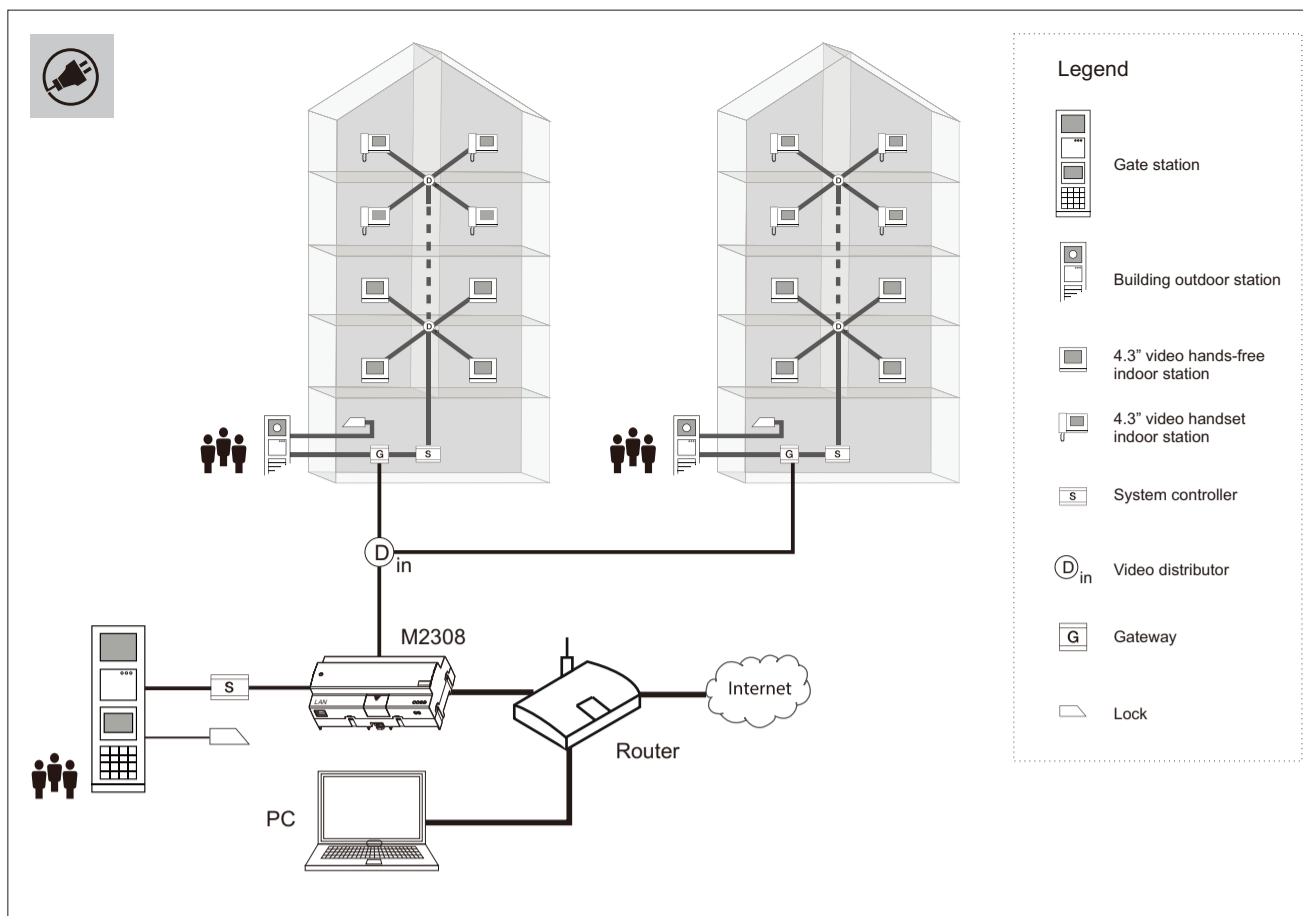
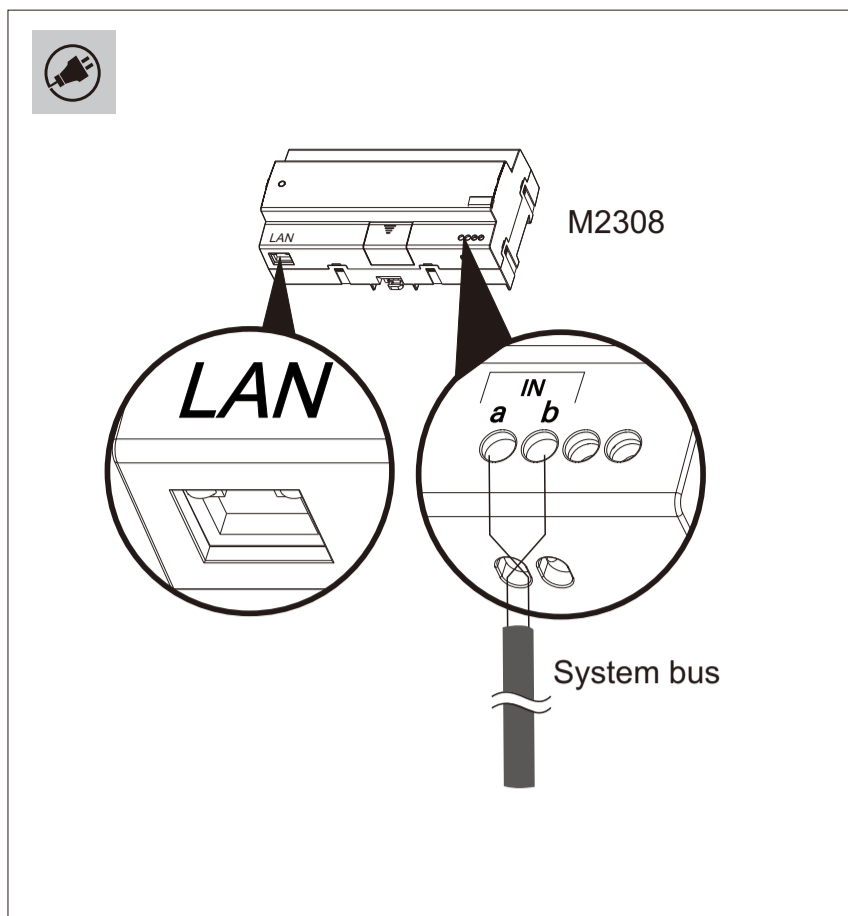
UDP: 3333, 3339, 4444, 6999.

Example of setting Window firewall

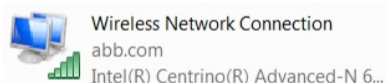
Following is an example for setting Window firewall. When starting the software the first time, Window firewall will pop up a notification. Confirm the path name includes "abb-welcome", then click "Allow access". (see picture 4)

It is recommend to check "Windows Firewall Inbound Rules" to see if the application is enable by Windows firewall successfully. (see picture 5)

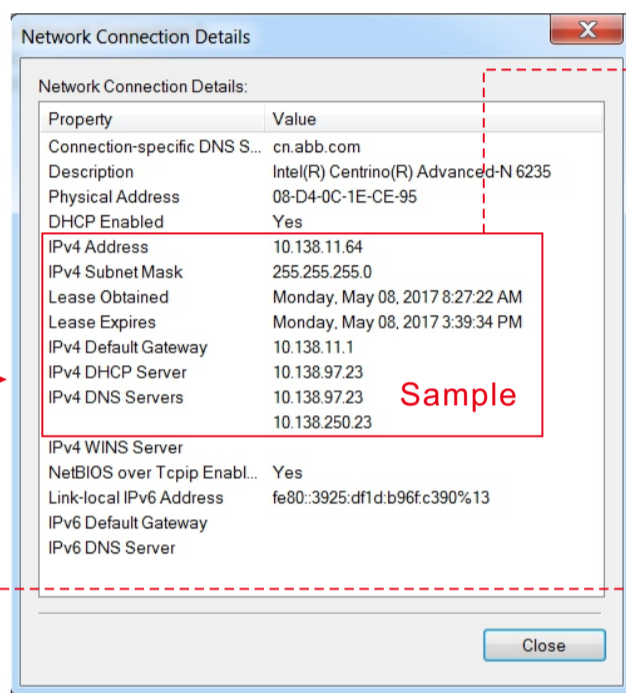
Please consult an qualified IT professional if above standard ports are still blocked by firewall, which might cause management software doesn't work.



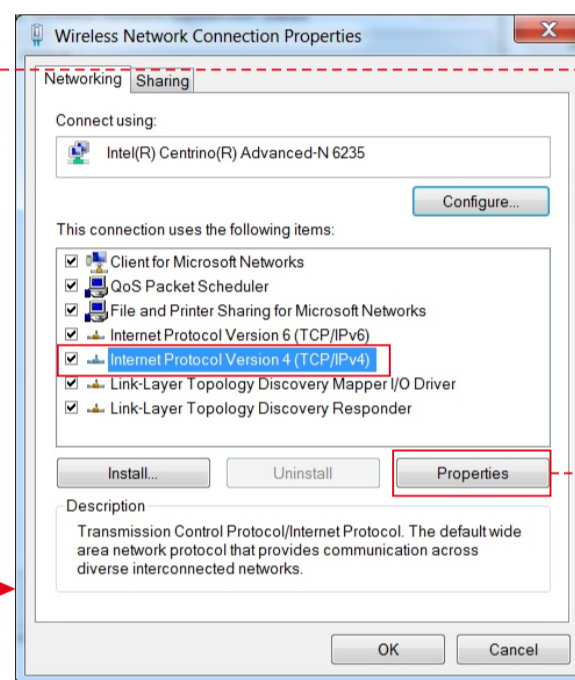
Sample



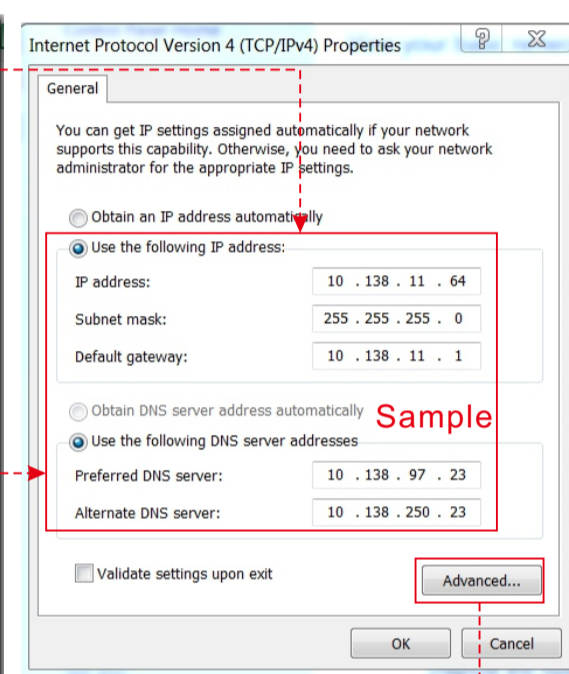
Picture 6



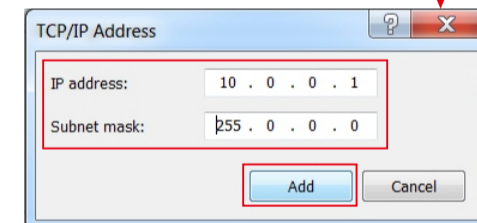
Picture 7



Picture 8



Picture 9



Picture 10

Scenario 2: PC and 2 wire adaptor are connected via a network

Step 1: Set IP address of PC

Precondition: PC must be set to obtain IP address automatically.

Destination: To set static IP address with exist IP address information

- Double click network connection icon to enter the "Network Connection Status" window. Click "Detail". (see picture 6)
- On "Network Connection Status" window. It will show IP details got from the router. These IP information will be used later. (see picture 7)
- Back to "Network Connection Status" window, click "Properties". (see picture 6)
- On "Network Connection Properties" window, select "TCP/IPv4", click "Properties". (see picture 8)
- On "TCP/IPv4 Properties" window, please select "Use the following IP address", then input IP information you recorded before. At last, please click "Advance". (see picture 9)
- On the pop-up window, input new IP address and subnet mask. (see picture 10)
IP address: 10.0.0.1

Step 2: Set network connection of PC

If PC connects to router by wireless network connection. Disable "Local Area Connection". (see picture 11)



Picture 11

If PC connects to router by cable. Disable "Wireless Network connection". (see picture 12)



Picture 12

Step 3: Enable ports of PC firework

Please see details in P1.