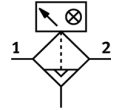
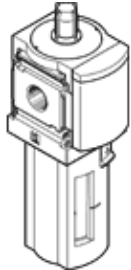


Fine filter MS4-LFM-1/8-BUV-DA

Part number: 537209



1 µm filter, metal bowl guard, fully automatic condensate drain, with differential pressure indicator, flow direction from left to right.



Data sheet

Feature	Value
Size	4
Series	MS
Assembly position	Vertical +/- 5°
Grade of filtration	1 µm
Filter efficiency	99.99 %
Condensate drain	fully automatic
Design structure	Fiber filter
Max. condensate volume	25 ml
Bowl guard	integrated as metal shell
Differential pressure display	Visual indicator
Working pressure	2 ... 12 bar
Max. standard flow rate for air quality class	360 l/min
Min. standard flow rate for air quality class	54 l/min
Operating medium	Compressed air in accordance with ISO8573-1:2010 [6:8:4] Inert gases
Corrosion resistance classification CRC	2
Storage temperature	-10 ... 60 °C
Air purity class at output	Compressed air in accordance with ISO8573-1:2010 [2:7:3]
Medium temperature	5 ... 60 °C
Residual oil content	0.5 mg/m ³
Ambient temperature	5 ... 60 °C
Product weight	350 g
Mounting type	Optional Line installation with accessories
Pneumatic connection, port 1	G1/8
Pneumatic connection, port 2	G1/8
Materials note	Free of copper and PTFE Conforms to RoHS
Materials information for seals	NBR
Materials information for filter	Boron silicate fiber
Materials information, housing	Aluminum die cast
Materials information for bowl	Aluminum die cast Wrought Aluminum alloy
Materials info, viewing window	PA